

LA CONQUESTA DEL POL SUD

Barcelona, 18th of July 2019

Technical Specification and Rider “Raphaëlle”

Technical Director: Luis Martí Ruiz

Phone: +34 651 992 194

Mail: luis@laconquesta.com

GENERAL GET IN / OUT INFORMATION

The show is 80 minutes long, without brake.

We need a minimum of 7 hours to get in.

Stage. Flat – NO RAKE.

Performance area 9 x 9 m. The depth of the performance area will depend on the lens provided for the projectors. 9m depth is according to a 0.8 lens

Video, Light and Sound, will be operated by the company from stage. According to that, DMX and sound cables must reach the stage.

Technicians supplied by the venue

1 Sound / video

2 Lights

2 Machinery

Sound

1 digital sound desk (provided by the company)

1 PA stereo system

3 headset microphones

2 monitors on stage for effects playback

Video

1 projector 16:10, At least 8000 Ansi Lumens, DVI/ HDMI input, equipped with 0.8 lenses.

1 projector 16:10, At least 8000 Ansi Lumens, DVI/ HDMI input, hanging in the audience. Lens to be determinate. In case the stage has less than 8m depth we can use 0.36 lenses, but we need to have a closer look on the placing of the set and lights.

Video server and cables provided by the company.

Lights

18 PC 1Kw

20 Profile Spotlights ETC 750w 25°-50°

4 PAR can CP62 No5

8 Side lights stands

5 Floor stands

3 Light bars on stage

1 Frontal bridge in the Auditorium

40 Dimmer Channels 2Kw.

Lighting desk (provided by the company)

The DMX signal cable has to go from stage to dimmers

Set (toured by the company)

8 platforms 200x100, with 80 cm, 60 cm and 40 cm legs, and stairs

1 PVC screen 600 cm x 400 cm with aluminium frame.

2 black chairs with wheels

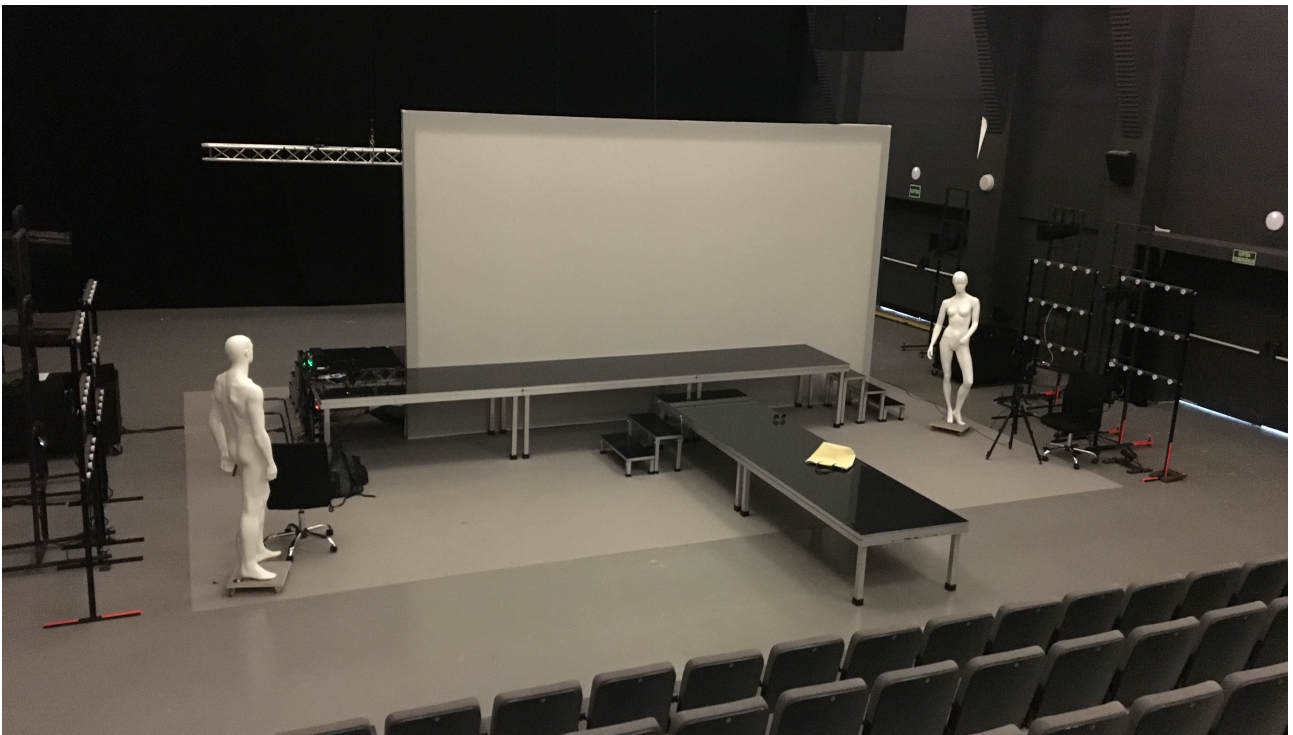
2 mannequins (1 male, 1 female)

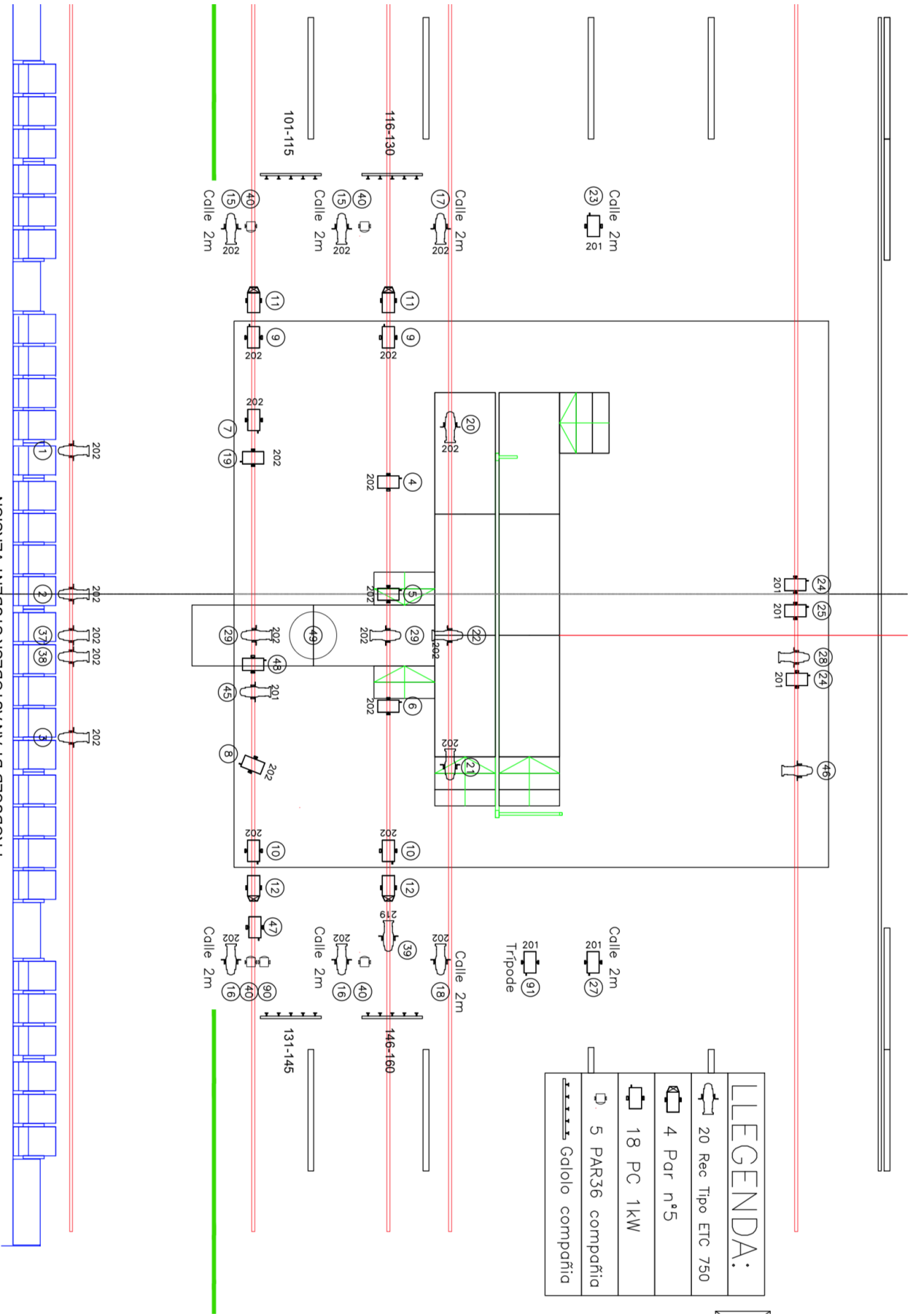
1 stools

54 m2 grey carpet

2 rolls of black glossy dancefloor

Props





LEGENDA:

	20 Rec Tipo ETC 750
	4 Par n°5
	18 PC 1kW
	5 PAR36 compañia
	Gallolo compañia